

Model 108 Fuel Conditioning System

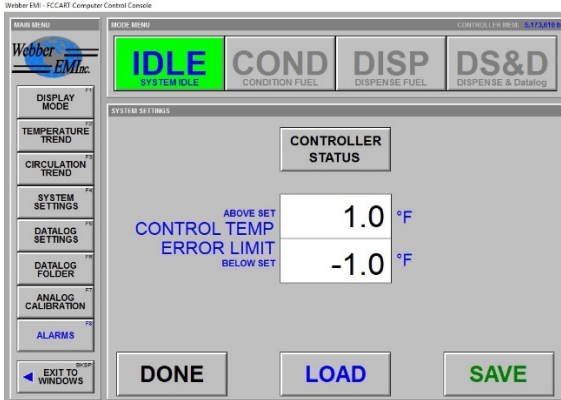


(Model 108 Fuel Conditioning Cart shown with 50 gallon On Board Tank)

The Webber EMI Model 108 portable FC Cart is designed to condition fuel to an operator-selected temperature and to precisely dispense fuel at that temperature via a conventional fuel dispensing nozzle. This Cart incorporates a 'closed fuel system' design to facilitate minimal loss of 'high end' hydrocarbons.

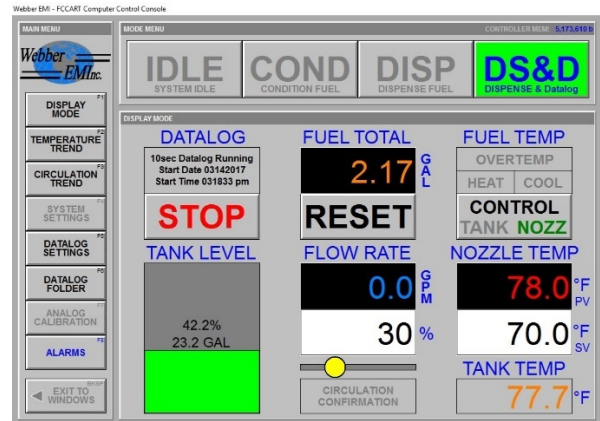
In addition to precisely dispensing temperature conditioned fuel, this Cart can also function as a safe, portable, transfer pumping system.

Our exclusive interface system allows an operator to quickly set up test parameters for the equipment, to be used during the re-fueling test. Additionally, the proprietary software integrates well with the Webber SHED Operating System to download Fuel Cart Data into the SHED Test Report.

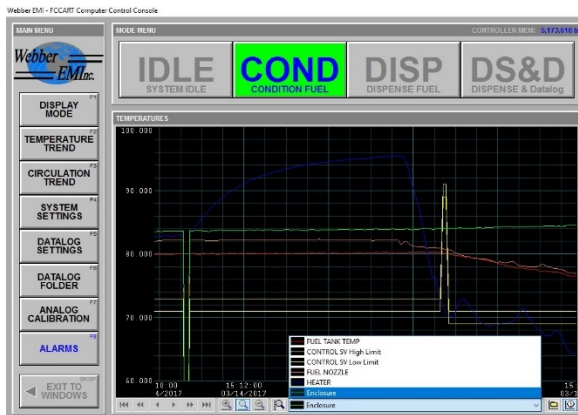


Easy and intuitive set up using a touchscreen monitor for establishing test parameters and limits. Flow rates, temperature settings and control limits are some of the many variables that can be established.

A variety of tabs can be selected to give the end user the information important to them and the test they are running. At the end of it all, the data is logged and saved to a CSV file. Allowing the user to download it into the Webber SHED Operating System for test reporting, or to a location of their choice.



Real time monitoring and charting of data is captured. The end user can scroll through a menu to select the data they may want to watch. All of the information, is captured and saved. Up to 30 days can be saved, if not moved to an external file location for storage of tests.



Portable Fuel Conditioning & Dispensing System Features

Standard features

- *12" Touch Screen monitor with computer. Microsoft Windows 10 with Office.*
- *Data logging and file transfer for use with Test Reporting, either with the Webber SHED Operating Software for ORVR Tests or downloaded to a customer defined report.*
- *On Board 25 or 50 Gallon tank. Customized sizes are available.*
- *¾" / 19mm non-collapsible 12ft / 3.7m fuel hose with installed nozzle recirculation block.*
- *Canister-style, screw-on fuel filter.*
- *Digital displays and recording in either English or Metric Units.*
- *10ft / 3.1m x 1" / 25mm I.D. non collapsible siphon hose for transferring fuel into the tank.*
- *Standard model for use with Gasoline and E10. Nominal price difference for full ethanol capability.*
 - *Gasoline – Flat 'BLACK' frame with textured 'RED' cover panels.*
 - *Alcohol – Flat 'BLACK' frame with textured 'YELLOW' cover panels.*

Safety Equipment

- *Class I, Div. II (Group D) explosion-proof pump & motor.*
- *Self-retracting, reel-mounted, anti-static grounding cable.*
- *Air-tight, lockable, spring-loaded, self-closing fuel cap with anti-flashback screen.*
- *Two-way fuel tank vent with spark arrester & charcoal vapor absorbing canister.*
- *Over-temperature cut-off switch.*
- *Low fuel circulation flow cut-off switch.*
- *Onboard fire extinguisher.*

General Specifications

- *50 - 113 °F / 10 - 45 °C temperature range.*
- *3 – 12 GPM / 11 – 45 LPM flow rate.*
- *Dimensions: 54in / 1.4m W x 36in / .91 m L x 75in / 1.9m H*
- *Weight: 1,000lbs / 454kg dry ~ 1,200lbs / 544kg wet.*
- *Power requirements: 220 VAC, single phase, 60Hz, 40 Amps.*

Optional features

- *Quick connect hose sets for use with an ORVR window with fittings on an enclosure.*
- *Vapor recovery delivery hose & nozzle on gasoline model.*
- *Custom color*